

pow'rtran™

Model JP-50P Jack Plate Installation Instructions

To save time, read these instructions completely before installing the Jack Plate. If you have any questions regarding installation of the Jack Plate please call

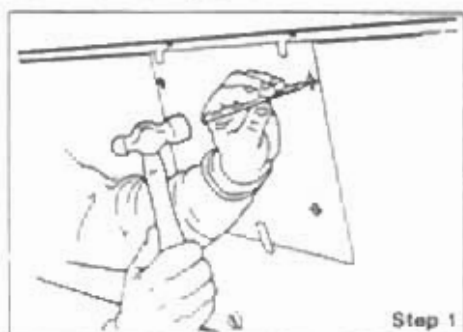
1-800-466-7697

Congratulations on your selection of the Pow'rTran, the finest aftermarket Jack Plate unit available! When properly installed it will provide trouble-free operation and convenience for many years to

come. Keep in mind that the Pow'rTran is an electrical-mechanical device. It has no hydraulic components. Therefore, the Pow'rTran is "ready to use," without the need for maintenance that hydraulic devices require.

For larger motors, dealer installation may be the most practical. Otherwise, installation takes about an hour, depending on your boat motor, and mechanical abilities.

Mounting the Pow'rTran to the Transom

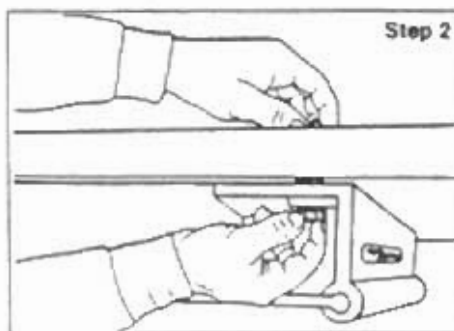


Step 1. Remove your outboard. The Pow'rTran's four pre-drilled mounting holes on its transom plate match the pattern of the stencil provided. It is the most common bolt pattern used by motor manufacturers for "bolt-on" type motors. For maximum strength and safety, we strongly recommend using this bolt pattern when mounting your Pow'rTran to your boat! (In many cases, this pattern will match the pattern already on your transom.) Simply center and tape the stencil on your transom. Punch through to mark your holes. Then drill through with a 1/2" drill bit. However, it is always a good idea to pre-drill with a smaller drill bit first.

IMPORTANT: The actuator unit of the Pow'rTran is mounted slightly off-center. Therefore, it *must not* be used as a "centering point" for mounting the Pow'rTran or outboard motor. Use the supplied stencil only!

Note: It is important to check the condition of your transom and repair any cracks, dryrot, etc., before reinstalling your engine. Also, plug all boat holes that you will not be using with silicone sealant.

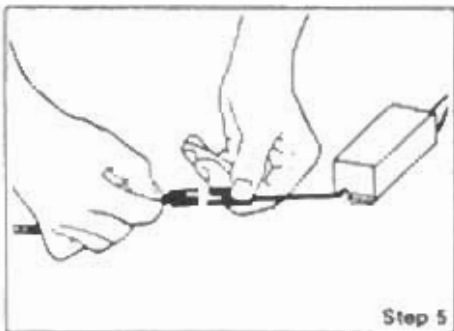
Note: If your transom has any screws or rivets obstructing the "flush" mounting of the Pow'rTran, we recommend using a sheet of treated plywood, 17"W x 14"H x 1/4"D with relief holes drilled through to allow for the obstructing screws and rivets. This sheet should be placed between the Pow'rTran and transom.



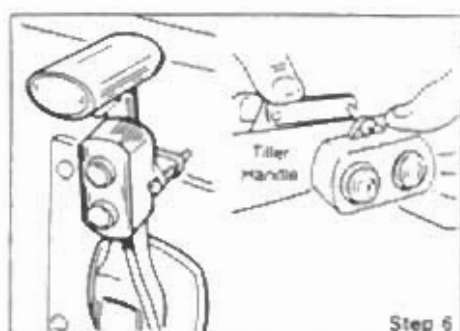
Step 2. Secure the Pow'rTran to your transom with the 1/2" stainless steel bolts, washers, and lock nuts provided.

Step 3. Securely mount the electrical control box out of the way and away from possible contact with water. The control box is water resistant but can not be submerged at any time. Mount accordingly.

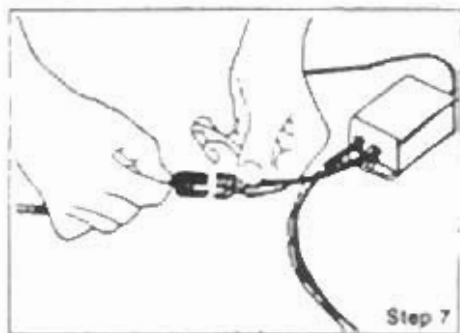
Step 4. The Pow'rTran's Actuator is equipped with a breather hose which runs into the wiring harness. Therefore, when running the harness from the actuator to the control box caution must be taken not to kink or strap it down so tightly as to restrict its ability to act as a breather line. Also make sure that either end of the wiring harness will not become submerged which could cause the actuator to draw in water.



Step 5. Apply corrosion protective grease (not supplied) to the wiring harness plug. Connect the 2-wire actuator motor cord plug to the 2-wire plug from the control box.



Step 6. Mount the control switch in a convenient location, such as a throttle control or motor tiller. Run the switch cable back to the control box.



Step 7. Apply corrosion protective grease (not supplied) to the 3-wire plug. Connect this 3-wire control switch plug to the 3-wire plug from the control box.

Step 8. Connect the lead wires from the electrical control box to the battery posts. The black goes to the negative post, the red goes to the positive post.

Step 9: Reconnect your steering and shifting cables and gas line to the motor.

Note: Retighten all mounting bolts after one hour of use.

For continued use in saltwater or an abnormally corrosive environment we recommend that you install an anode on your unit.

Trouble Shooting Guide

The left hand column identifies possible problems that may be experienced in the operation of your Pow'rTran, the center column lists possible causes and the right hand column lists suggested remedies.

The

PROBLEM	POSSIBLE CAUSE	SUGGESTED REMEDY
Lack of power—motor stops & goes	Low battery charge Battery old or weak—won't hold a charge Dirty/loose battery cable connections Loose control box/plug/cable connections Defective control box Defective actuator motor	Charge battery Replace battery Clean and tighten battery connections Check and tighten plug connections Replace control box Replace actuator motor
Unit will run one direction only—up or down	Defective control box or switch	Consult Pow'rTran Factory Service

Removing Pow'rTran Actuator

The Pow'rTran actuator is secured by two clevis pins, located at the top and bottom of the actuator. To remove the clevis pins, carefully remove the cotter pins or clip pins from the clevis pins.

CAUTION: DO NOT PUSH CLEVIS PINS OUT WITH FINGERS AS SUDDEN MOVEMENT COULD RESULT IN SERIOUS INJURY.

After removing the clevis pins, lift the actuator out of the Pow'rTran.

To avoid possible injury, remove motor, before attempting to remove clevis pins, or actuator.

The Pow'rTran Warranty Program

Thank you for choosing a Pow'rTran product. This quality unit is covered by the following limited warranty.

For a two (2) full years after date of purchase, your Pow'rTran unit is warranted to operate properly under conditions of normal use. This warranty includes all electrical and mechanical components.

If the unit fails to operate properly during the first two years after purchase, call Pow'rTran so appropriate and satisfactory action may be taken. If a return is required, a company representative will provide you with information to facilitate the return.

Repair or replacement will be made and the repaired or new unit shipped back to you via prepaid freight, usually within ten (10) days of receipt. Proof of purchase must be provided for all warranty claims.

This warranty does not cover damage due to rust, corrosion, accident, or abuse of the unit.

This is the only warranty and all other warranties, including implied warranties of merchantability or fitness for a particular purpose, are disclaimed. Some states do not allow limitation on how long an implied warranty lasts, so the above limitation may not apply to you. This warranty does not cover any incidental or consequential damages. Some states do not allow the exclusion or limitation of incidental or consequential damages, so the above limitations may not apply to you.

This warranty applies only if the unit is installed pursuant to instructions and the unit is not subject to damage, other

than that which may occur in ordinary use, such as collision from the rear, fire, explosion, vandalism or sinking. Warranties are valid only if serviced by the factory.